

PART OF S.E. 1/4 OF S.W. 1/4 OF SEC. 35, T.6 N., R. 2 W., S.L.B. & M.

116

KAP SUBDIVISION

TAXING UNIT 170,172

IN WEBER COUNTY

PREFIX: 15-116

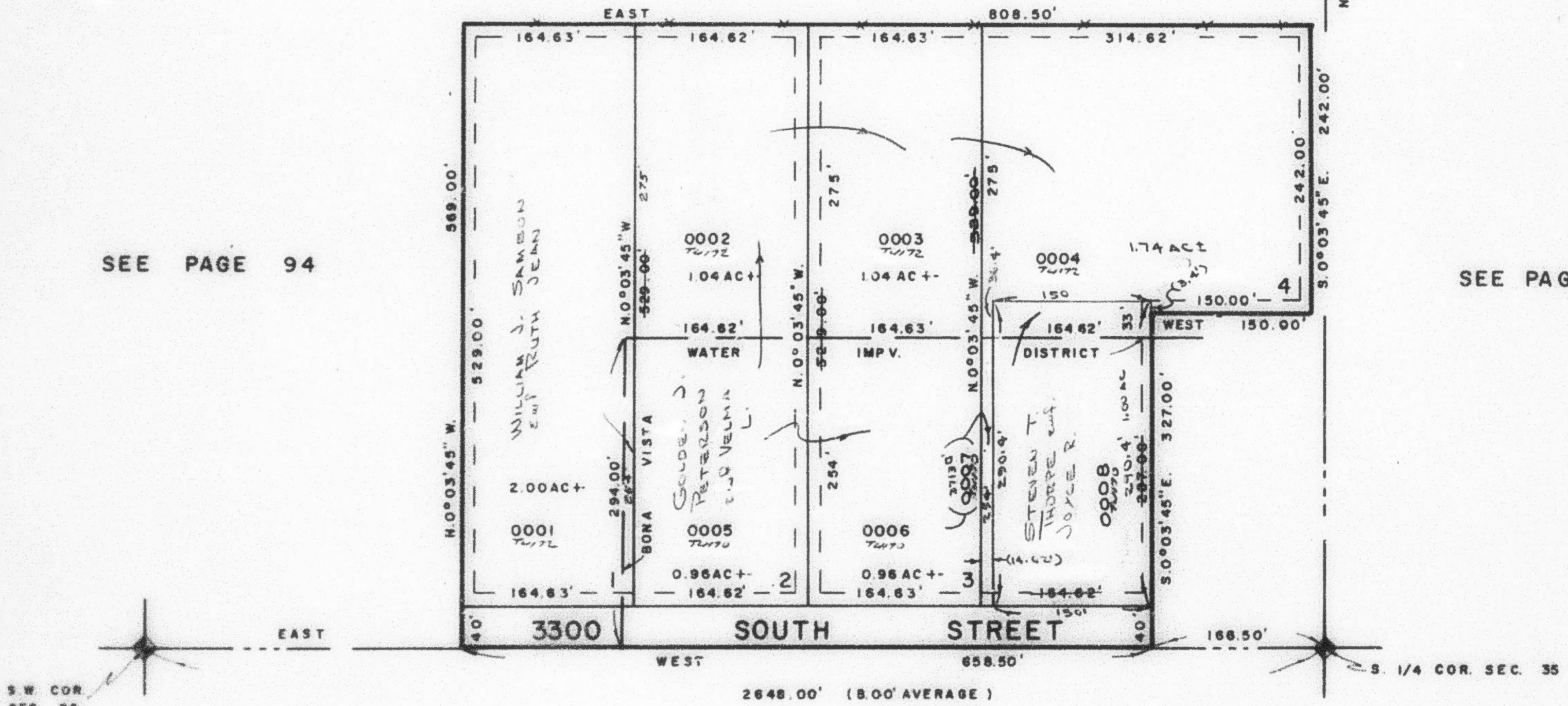
SCALE 1"=100'

EXCEPT WHERE OTHERWISE SHOWN
ALL LOTS OWNED BY:
JACOB KAP
E.S. MILDRED

SEE PAGE 94

SEE PAGE 94

SEE PAGE 94



SEE BK. 8 P. 28

SEE BK. 8 P. 6

7' UTILITY & DRAINAGE ESMTS. EACH
SIDE PROPERTY LINES AS INDICATED
BY DASHED LINES

FOR COMPLETE ENG. DATA SEE ORIG.
DED. PLAT IN BOOK 17, PAGE 38